

Building institutional capacity: challenges in a continental-sized country

Paulo Varella

Marseille, France

March 15, 2012



MARSEILLE, FRANCE '12

TIME FOR *SOLUTIONS*

Brazil



Political System (Federative Republic)

- 1 Federal District (Capital City Brasília)
- 26 States
- 5,565 Municipalities

Economy

- GDP: US\$ 2.44 trillion (6th largest)

Geography and Demographics

- Total Area: 8.5 million km² (5th largest)
- Population: 190 million inhab. (5th largest)
- 80% living in urban areas
- HDI: 0,699 in 2010 (High HDI)

Renewable Water Resources (RWR)

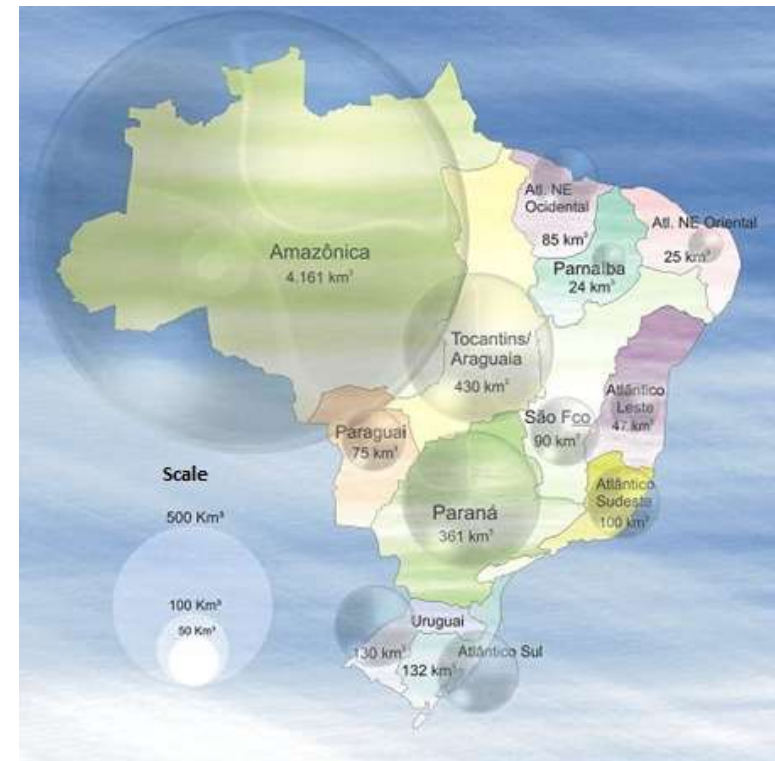
- Internal RWR:

5,660 km³/year (12.5 % of Global RWR)

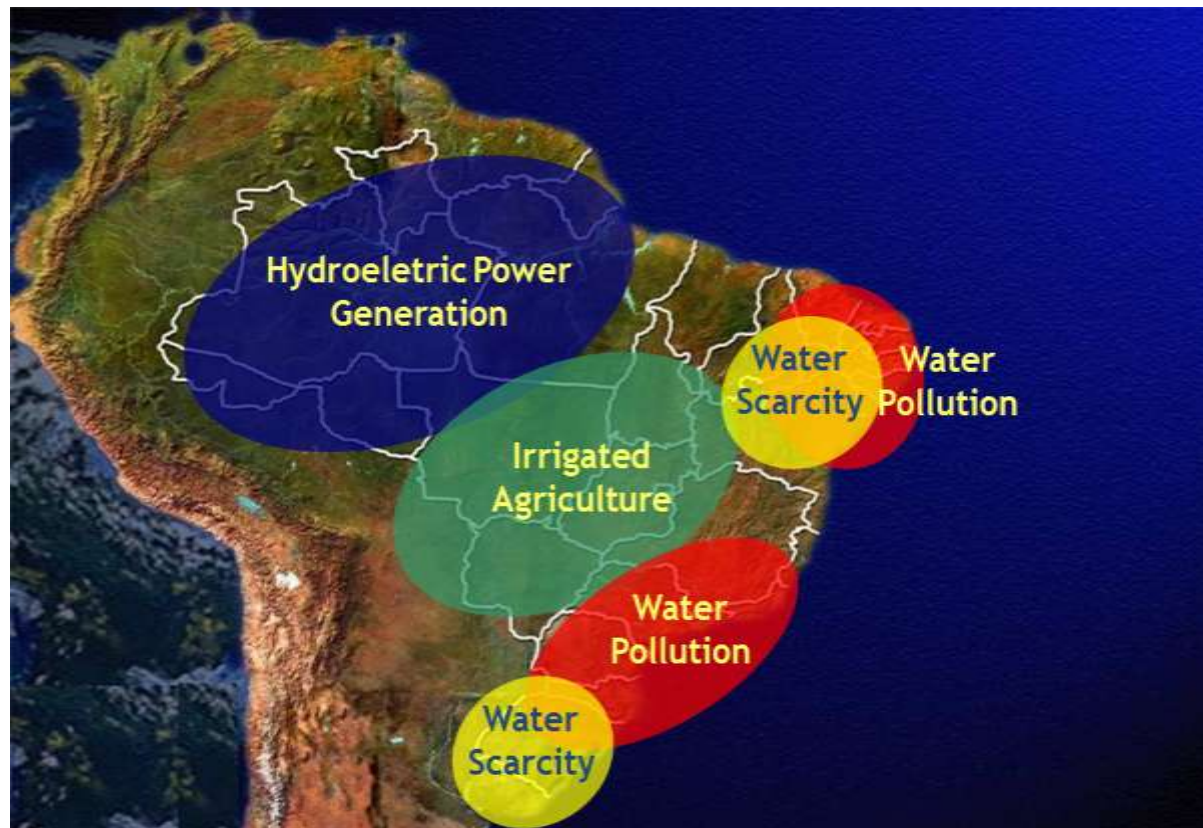
- Total RWR*:

8,427 km³/year (18% of Global RWR)

() Considering contribution from upstream countries in the Amazon River Basin*



Brazil's Regional Water Challenges



Legal Framework

Federal Constitution of 1988



TITLE III - CHAPTERS II and III

National Jurisdiction (national water resources), in the case of transboundary rivers and surface waters shared by two or more States;

State Jurisdiction (state water resources), in the case of groundwaters and surface water bodies not shared with other States.

Legal Framework

Federal Constitution of 1988



TITLE III - CHAPTER II

“Article 21. It is upon the Union the responsibility:

(...)

*VI – to establish a **national water resources management system** and define criteria for licensing of water uses.”*

Original Text: “Art. 21. Compete à União: (...) XIX - instituir sistema nacional de gerenciamento de recursos hídricos e definir critérios de outorga de direitos de seu uso”

Legal Framework

National Water Resources Management Policy of 1997

- Water is a *public good*;
- Water is a limited natural resource, which has *economic value*;
- During water shortages, *priority* in the use of water is for drinking water and for supplying livestock;
- The *river basin* is the appropriate unit for water resources management;
- Water resources management shall guarantee the *multiple uses* of water;
- Water resources management shall be *decentralized* and *open to the participation* of the water users, local communities and the organized civil society.



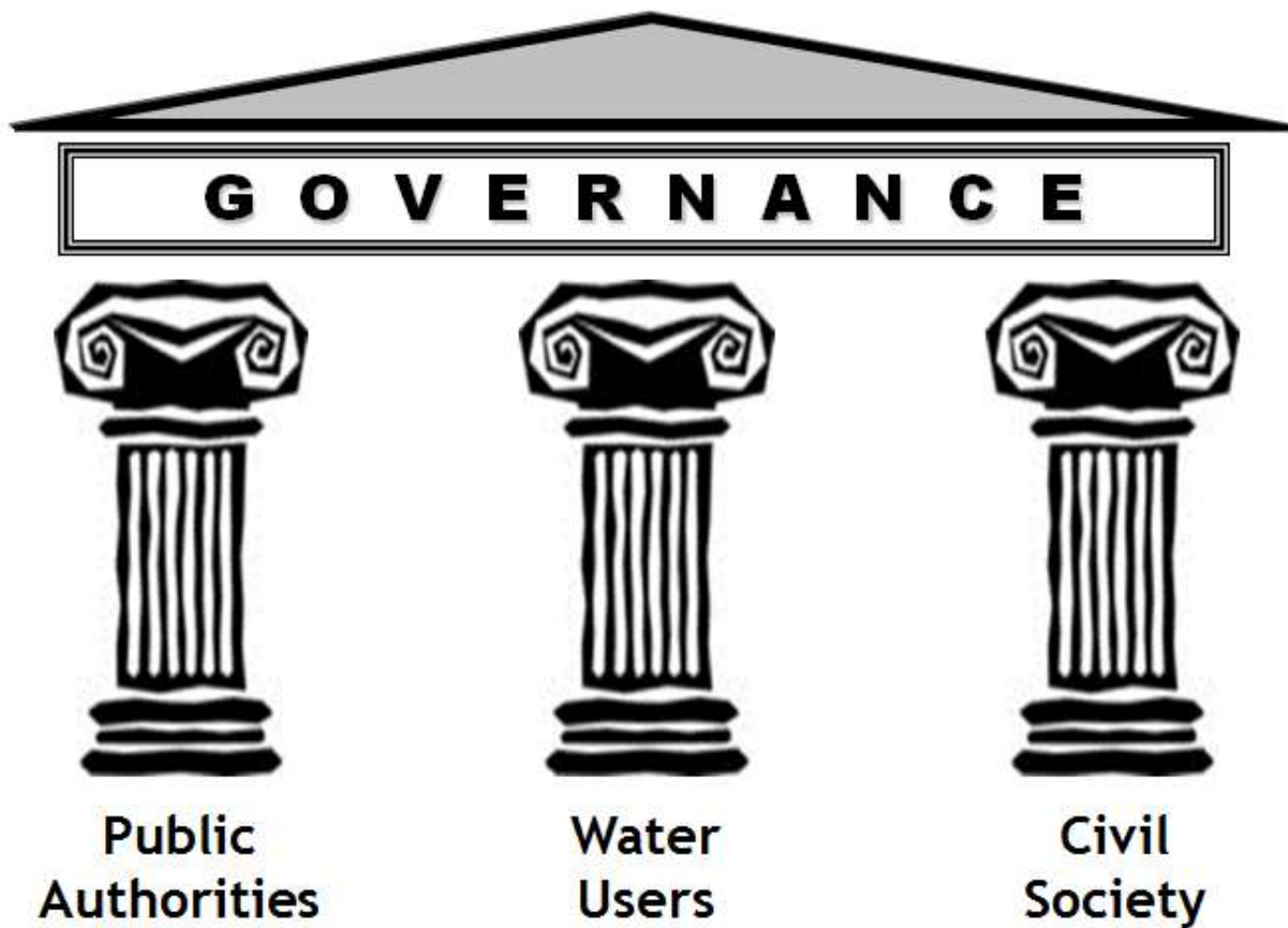
G O V E R N A N C E

**Decentralized
WRM**

**Participative
WRM**

**Integrated
WRM**

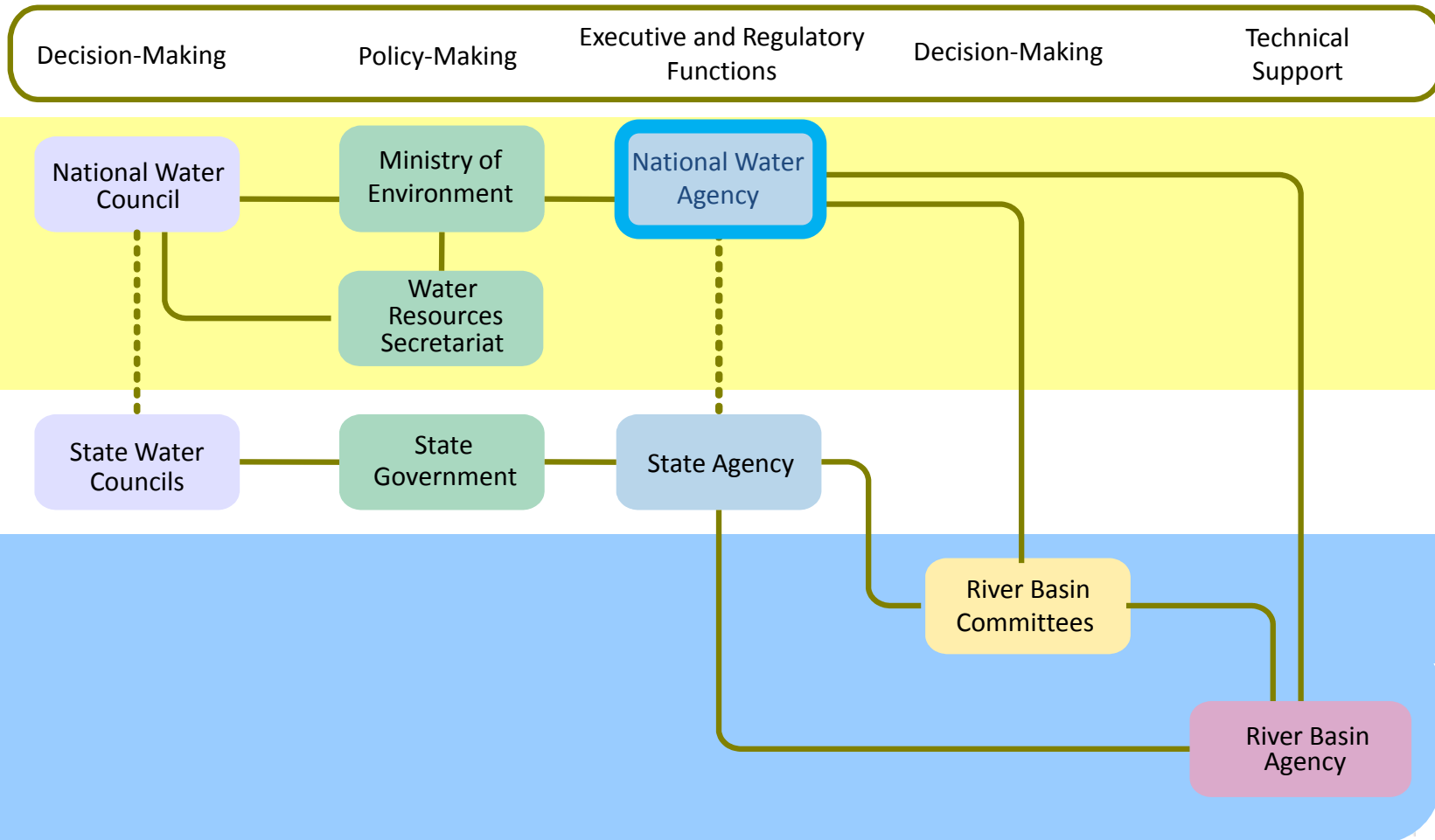
Author: Paulo Libanio



Author: Paulo Libanio (ANA)

Institutional Framework

National Water Resources Management System



Institutional Framework

National Water Agency

**Executive
Role**

**Water
Policy**

COORDINATION

National Water Resources Management System (SINGREH)

IMPLEMENTATION

Water Resources Management Policy (Planning, Information Systems, etc)

SUPPORT

Technical and financial support for River Basin Committees

**Regulatory
Role**

**Water
Policy**

CONTROL

Rulemaking and issuing permits for use of national water resources

ENFORCEMENT

Overseeing water users, monitoring the compliance with regulations

**Water
Services**

CONTROL

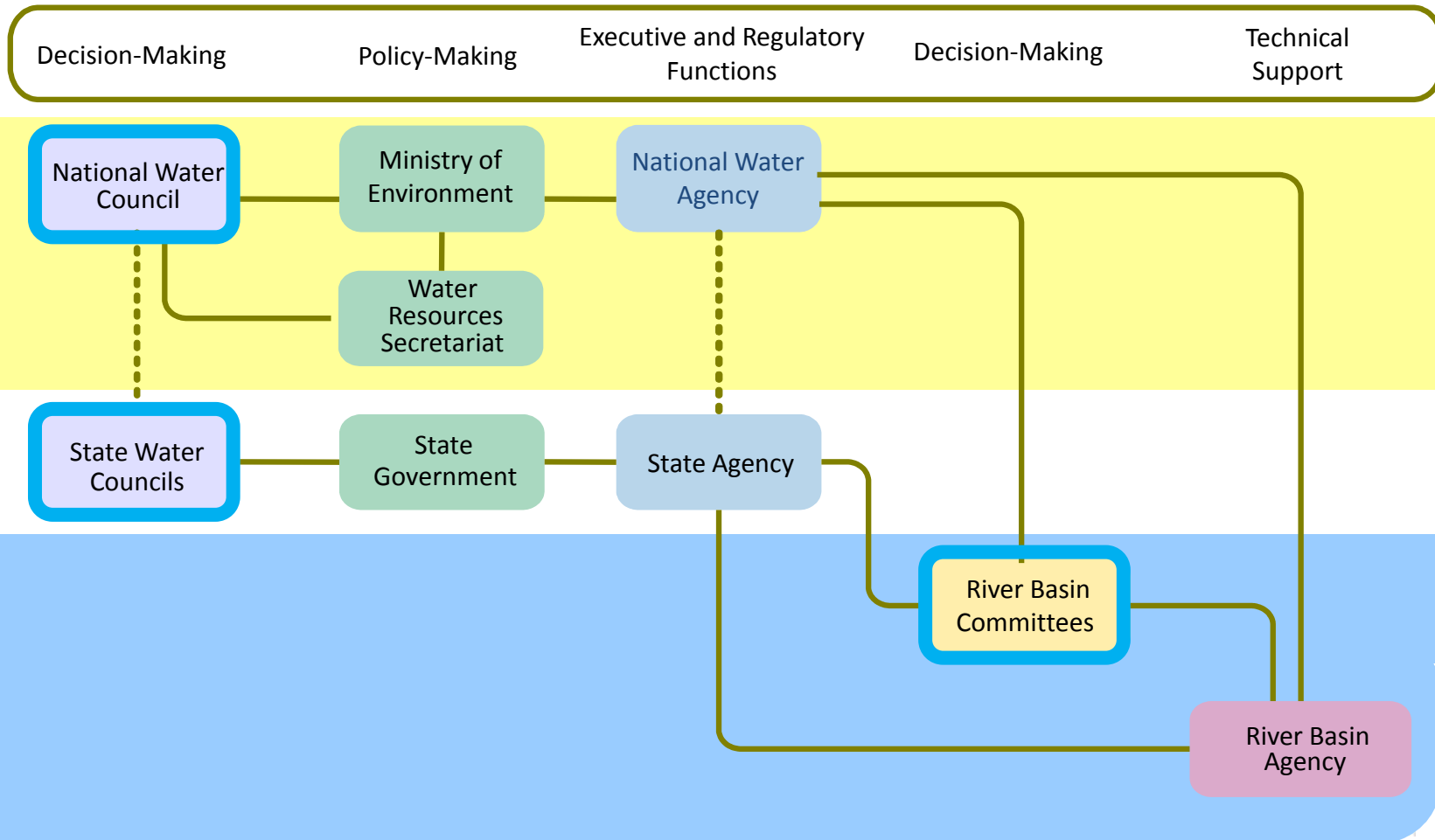
Setting of tariffs, technical standards, guidelines for raw water services

ENFORCEMENT

Overseeing service provision and compliance with contractual conditions

Institutional Framework

Water Councils and River Basin Committees



Institutional Framework

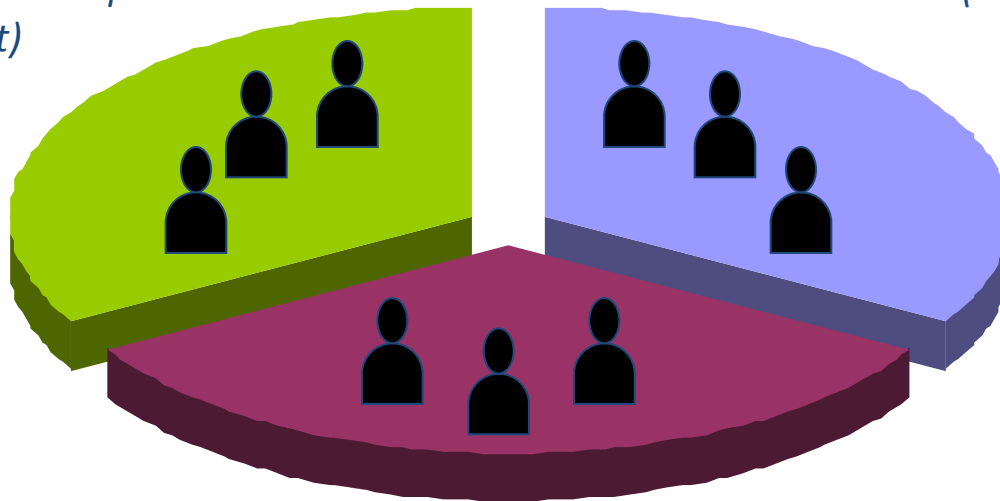
Water Councils and River Basin Committees

Public Administration

(Federal, State and Municipal Government)

Water Users

(Agriculture, Industry, Water Services)

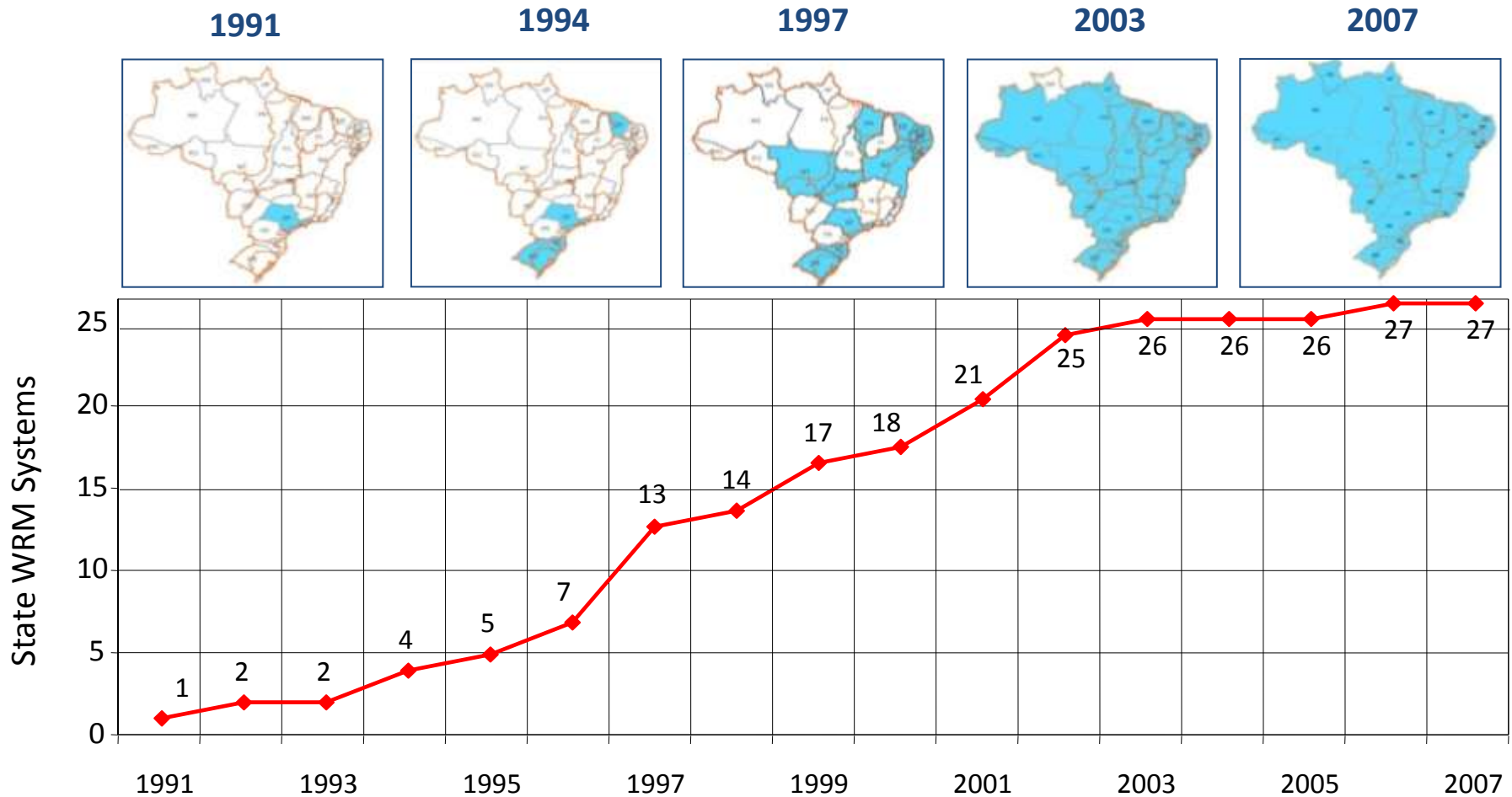


Civil Society

*(NGOs, education and research institutions ,
Professional Associations)*

Progress in Water Governance

State WRM Systems



Progress in Water Governance

Interstate and state river basin committees

1988



1991



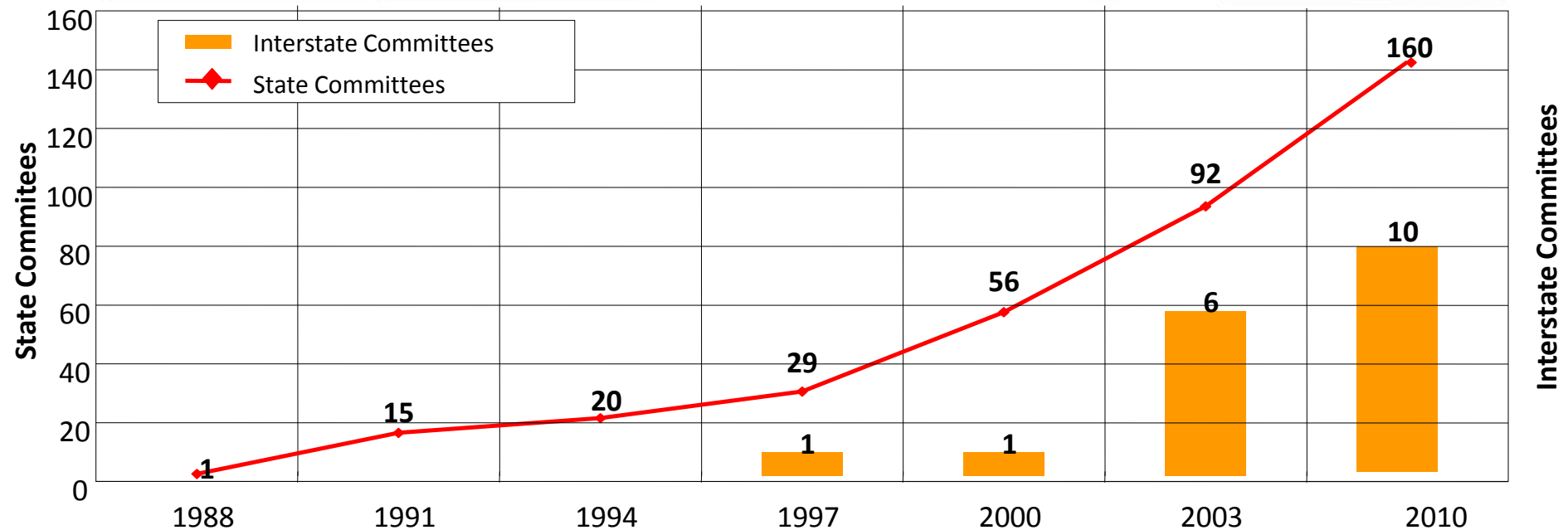
1997



2003

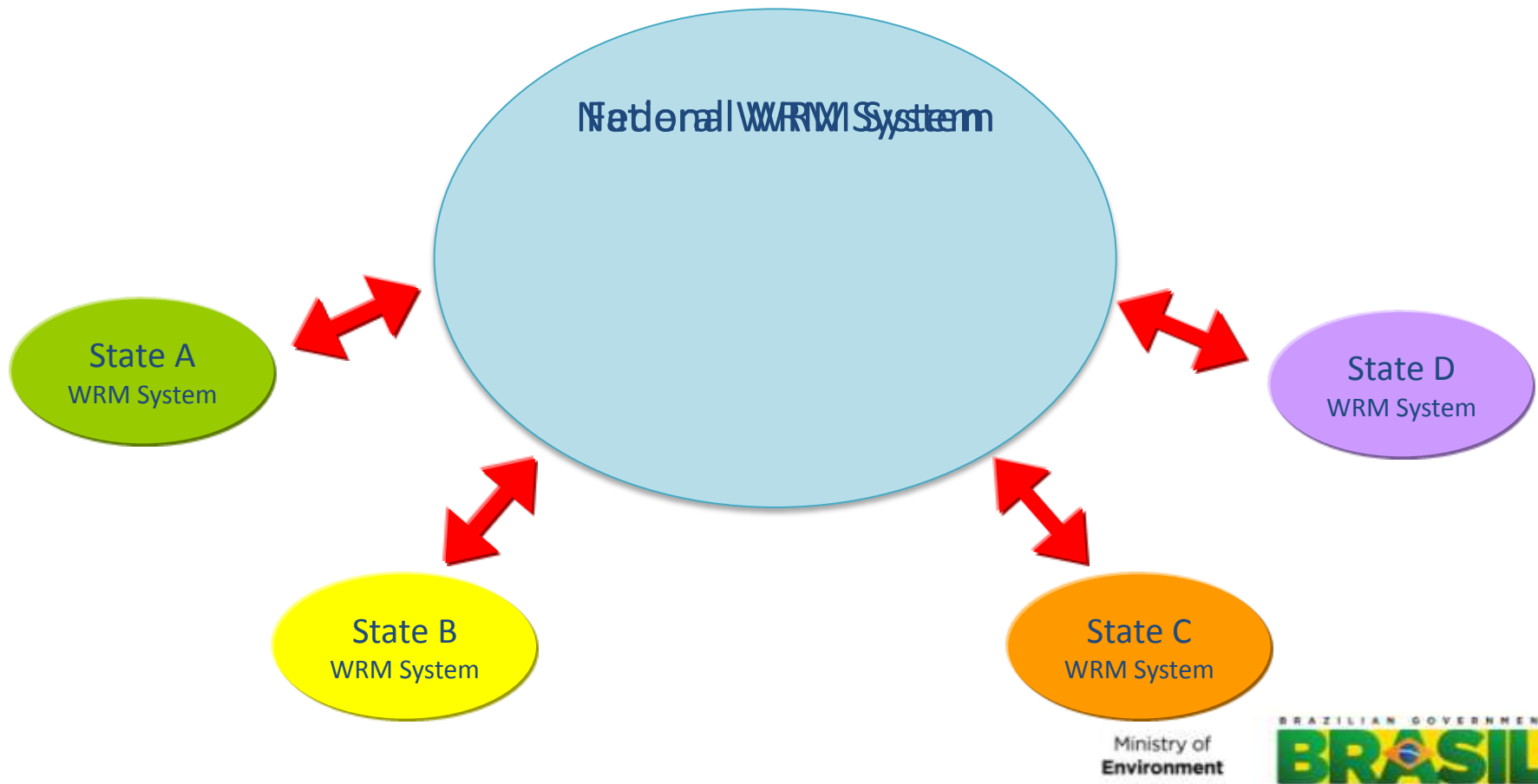


2010



Great Challenge

Integrating National and State WRM Systems



IWRM Agenda

1991 - 2011

2011...

Legal Framework

- *Issuing of the National Water Resources Management Policy*
- *Issuing of WRM Policies in all 27 States*

- *Increase the integration with the Environmental Policy*
- *Increase the integration with local policies*
- *Increase the integration with sectorial policies*

Institutional Framework

- *Creation of the National WRM System*
- *Creation of 27 State WRM Systems*

- *Strengthen the State WRM Systems*
- *Bring the National and State WRM Systems together.*

IWRM Agenda

Decision-Making

1991 - 2011

- *Creation of Interstate and State Water Councils*
- *Creation of the first Water Agencies*

2011...

- *Strengthen the Water Councils and River Basin Committees*
- *Strengthen the Water Agencies*
- *Increase the participation of local public authorities*

Management Tools

- *Approval of the National WRM Plan and various state and watershed plans*
- *Establishment of water permits systems*
- *First experiences with charging for water use*

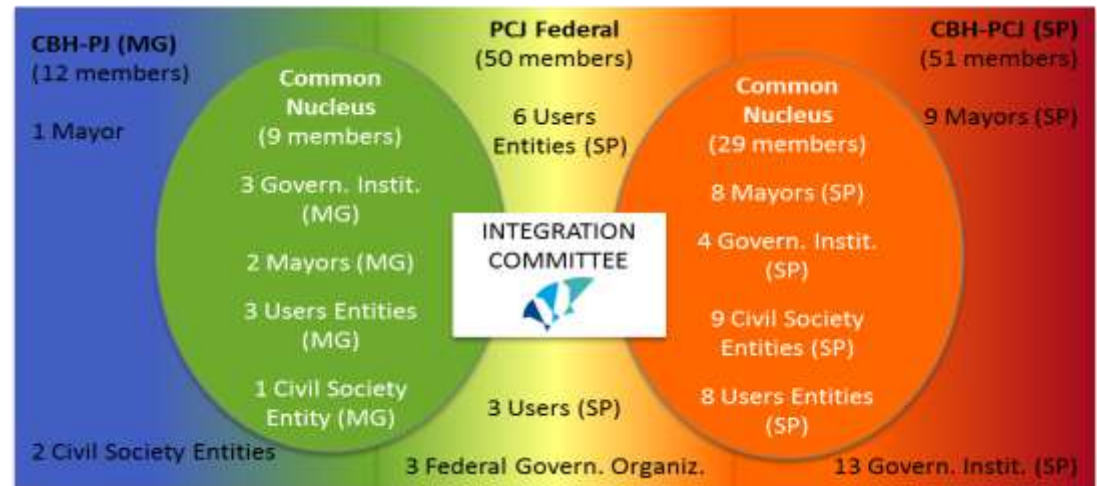
- *Implement existing water resources plans*
- *Improve the regulatory procedures for water use*
- *Expand and diversify funding for water resources management*

The Case of PCJ River Basins

Green Growth



IWRM in Brazil



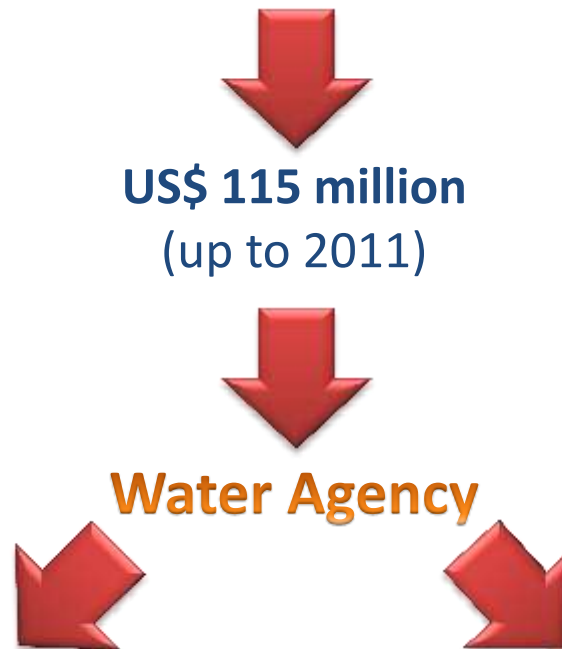
The Case of PCJ River Basins

Green Growth



IWRM

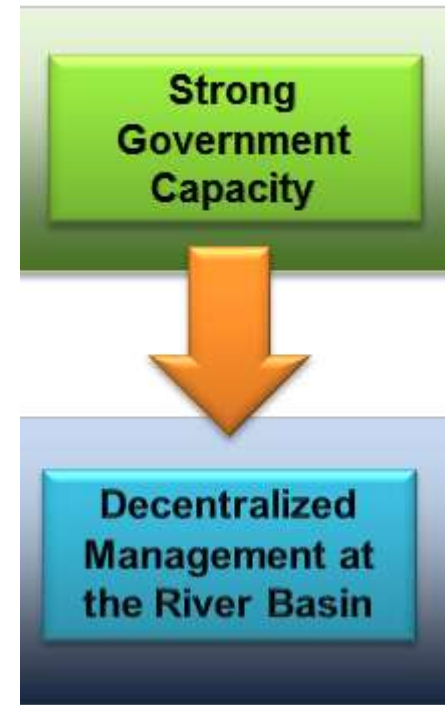
Charge for water users



>100 projects
(mostly sanitation)

PES
(Water Producer)

Green Growth



IWRM

Thank you!

Paulo Varella
Director

paulovarella@ana.gov.br | (+55) (61) 2109-5157

www.ana.gov.br



www.twitter.com/anagovbr



www.youtube.com/anagovbr