



This project has received funding from the European Union's Horizon 2020 research and innovation programme under grant agreement No 763562

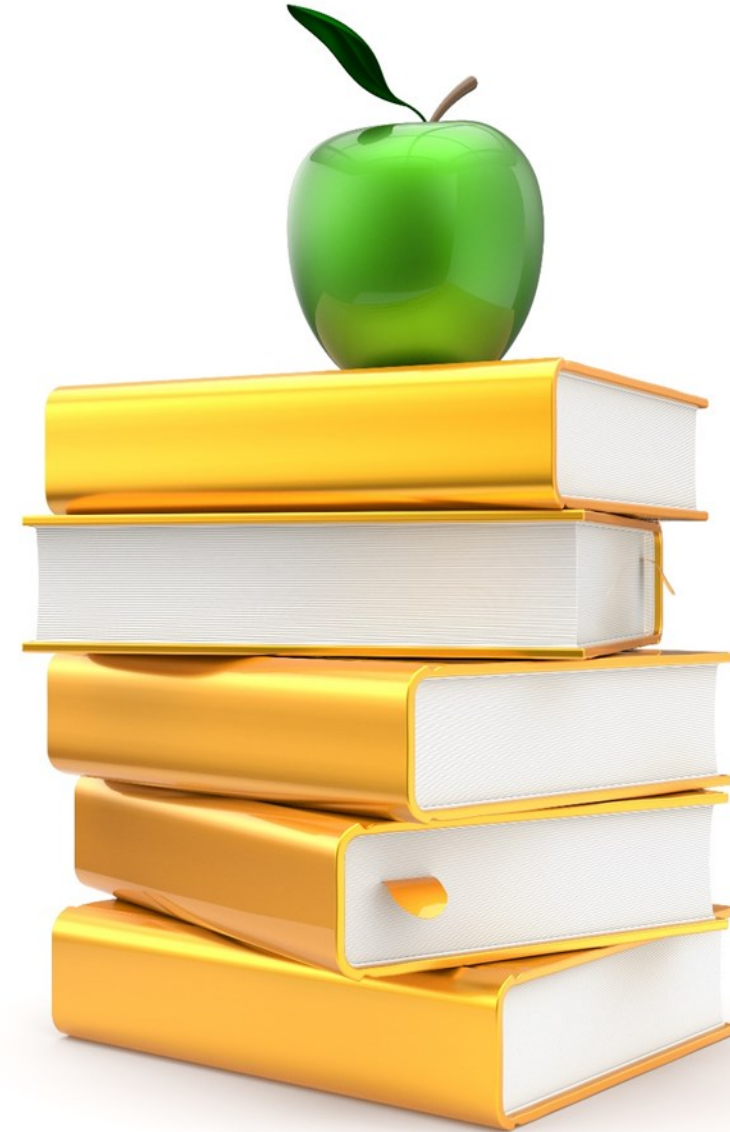


LIS-Water: The new centre of excellence for water
Better water governance for a better world!

**General
presentation
of LIS-Water**

■ LIS-Water profile

- **Is a not-for-profit Centre of Excellence on R&I, focused on public policies, regulation and management of water services and related water resources.**
- **Intends to contribute to finding suitable solutions for global water governance problems, namely to help countries complying with UN Sustainable Development Goal 6+ and many other international, regional and national guidelines.**
- **Will provide innovation in approaches, processes, services, business models, governance models, products, and technologies.**

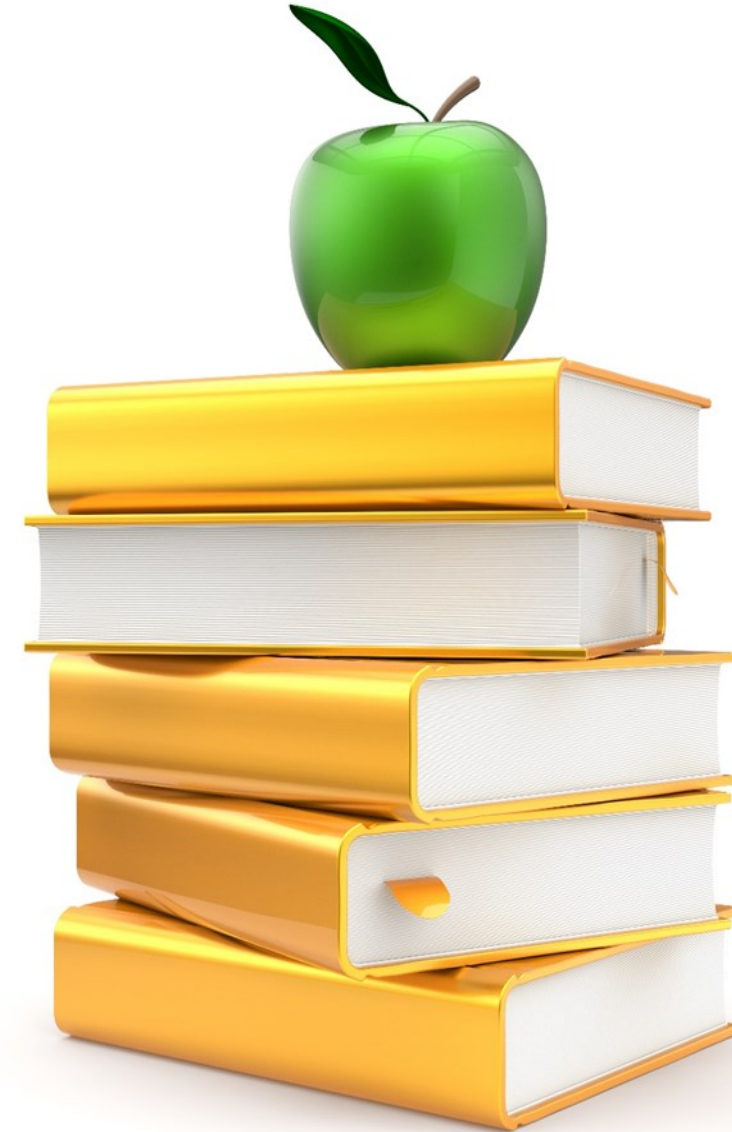


■ LIS-Water mission

- **Contribute to a better world.**
- **Through implementing excellent research and innovation activities.**
- **To achieve improved water services and related water resources management.**

■ LIS-Water vision

- **Build a vibrant, innovative, open, supportive and widely recognised international Centre of Excellence.**
- **Leading edge research and innovation related to aspects of public policy, regulation and management of water.**



■ LIS-Water presentation

- **LIS-Water founding members:**
 - LNEC, Portugal
 - Cranfield University (UCRAN), United Kingdom
 - Sorbonne Business School (IAE de Paris), France
- **We also have advice and support from SPI.**
- **A large number of organisations support LIS-Water, most of them are expected to be actively involved in the future.**



LIS-Water supporting organisations (58)

Governmental and public administration



Universities and research centres



Water utilities



Media



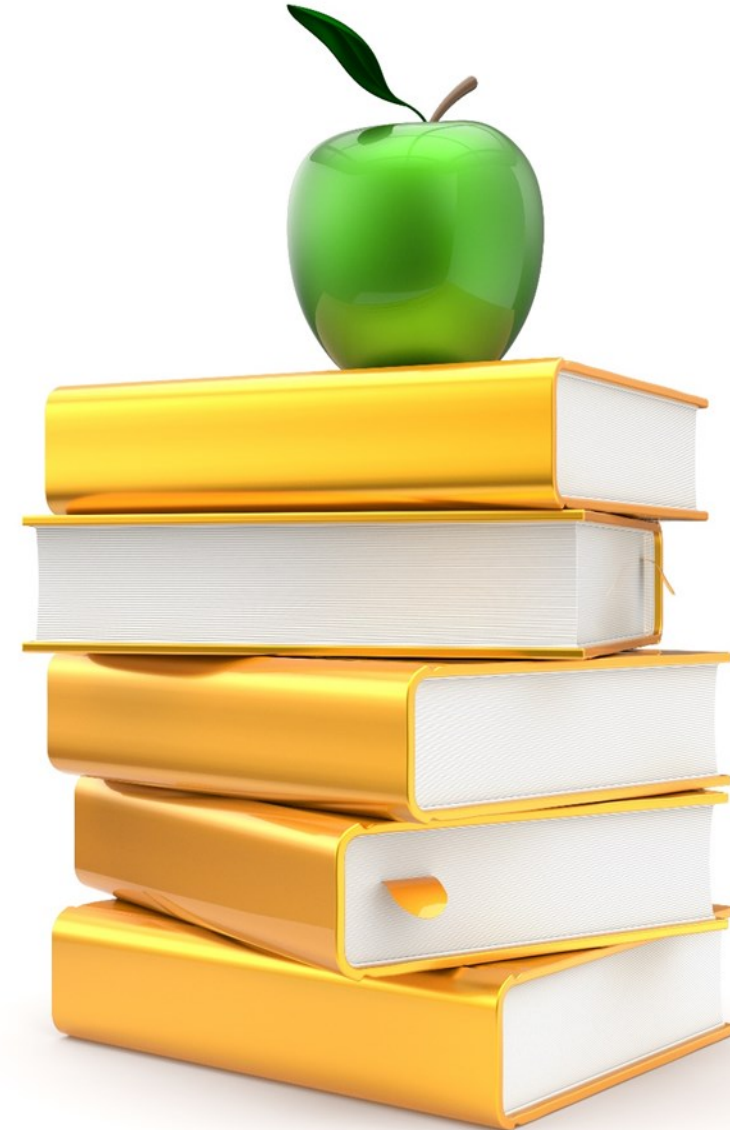
Associations on water and related areas



Private companies in the water sector



International organisations



■ Geographical markets

- National potential water market
- Lusophony potential water market
- International potential water market

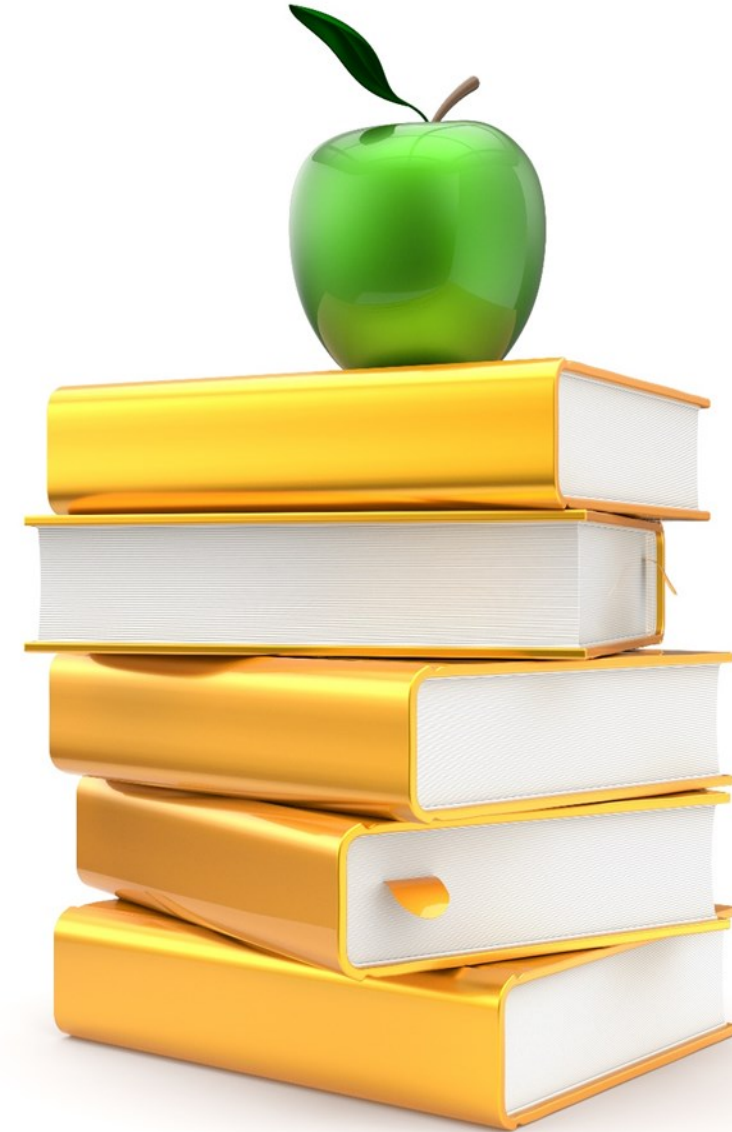


■ Languages adopted



■ Expected impacts

- Impact on LIS-Water associates
- Impact on the world water sector
- Impact on water professionals



LIS-Water activity strategy

■ LIS-Water areas of activity

- Core area of activity is **research and innovation**, which will provide new knowledge to all the components of the water value chain.
- Then adds four complementary strategic areas of activity:
 - **Education, training and capacity building**
 - **Think-tank and strategic advice**
 - **Business and startup support**
 - **Community outreach and engagement**



■ Research and innovation

- **What goal?**
 - **Boost research and innovation in the water sector in aspects related to public policies, regulation, and management, using a multidisciplinary approach and addressing emerging issues.**
- **What activities?**
 - **Knowledge collection and review**
 - **Knowledge production and innovation**



- **Education, training and capacity building**
 - **What goal?**
 - Offer high-level education, training and capacity building initiatives for water professionals, at international and national levels, thus reinforcing the intellectual capital in the sector.
 - **What activities?**
 - Postgraduate education
 - Training for executives and professionals
 - Capacity building
 - Mobility, exchange and integration



■ Education, training and capacity building

- Example of the standard training course for executives and professionals:
 - 4 (split) weeks training course at LNEC campus in Lisbon
 - 36 modules / 108 hours
 - 4 technical visits / 16 hours
 - Multidisciplinary and theory/practice approach
 - Accommodation and meals at LNEC campus
 - Health care and cultural and outdoor exercise facilities
- The training course can be adapted to specific demands and contexts.
- The training course can be held in any country.



■ Think tank and strategic advice

- **What goal?**
 - Assist different levels of decision makers in the water sector to define the best approach to solve problems based on an independent, innovative, simple and effective strategic advice.
- **What activities?**
 - Think tank / brainstorming
 - Strategic advice
 - Dialogue with policy stakeholders
 - LIS-Water high level water conference



■ Business and startup support

- **What goal?**
 - **Assist companies in general, mainly small and medium enterprises (SME), entrepreneurship and new venture developments to explore innovation in the water sector and create jobs, sharing knowledge and experience, and improving competitiveness, namely through incubation & acceleration of start-ups.**
- **What activities?**
 - **Challenging innovation**
 - **Startup incubation**
 - **Startup acceleration**
 - **Business advice and support**



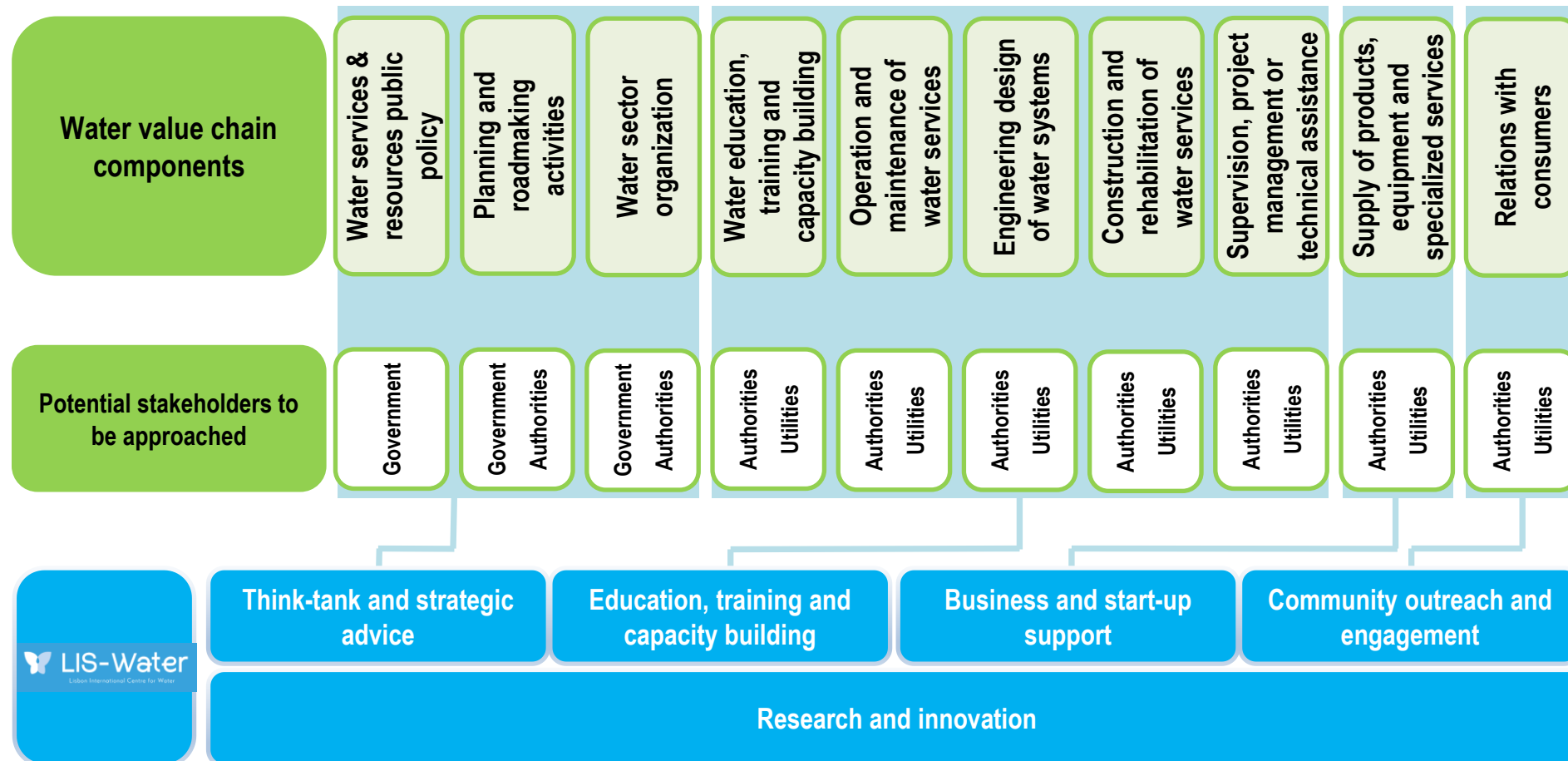
■ Community outreach and engagement

- **What goal?**
 - Raise awareness on water issues and improve consumer protection, public engagement, ethics, integrity and information through society at large.
- **What activities?**
 - Community outreach
 - Water awareness
 - Social engagement support



LIS-Water scope

■ LIS-Water businesses rely on a sustainable value chain:



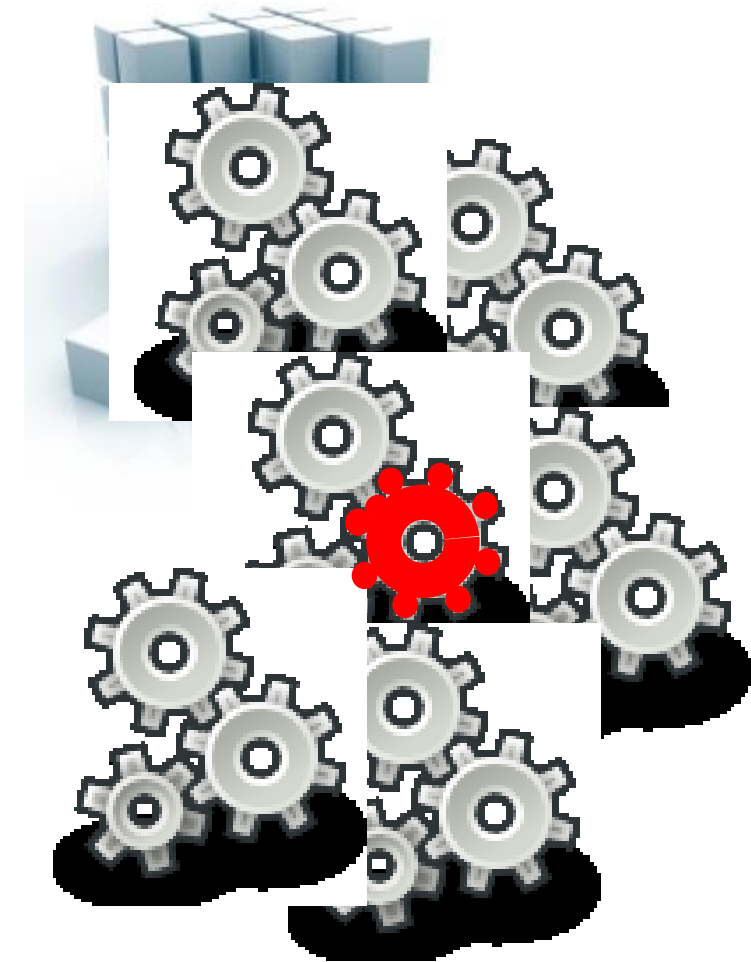
■ A sound public policy for water:

- Strategic plans.
- Legislative framework.
- Institutional framework.
- Governance models.
- Service access targets.
- Quality of service goals.
- Tariff policy.
- Tax policy.
- Financial resources.
- Construction & renovation of infrastructures.
- Structural and operational efficiency.
- Capacity building.
- Research and innovation.
- Entrepreneurship.
- Competition.
- Users protection, awareness and involvement.
- Data and information.



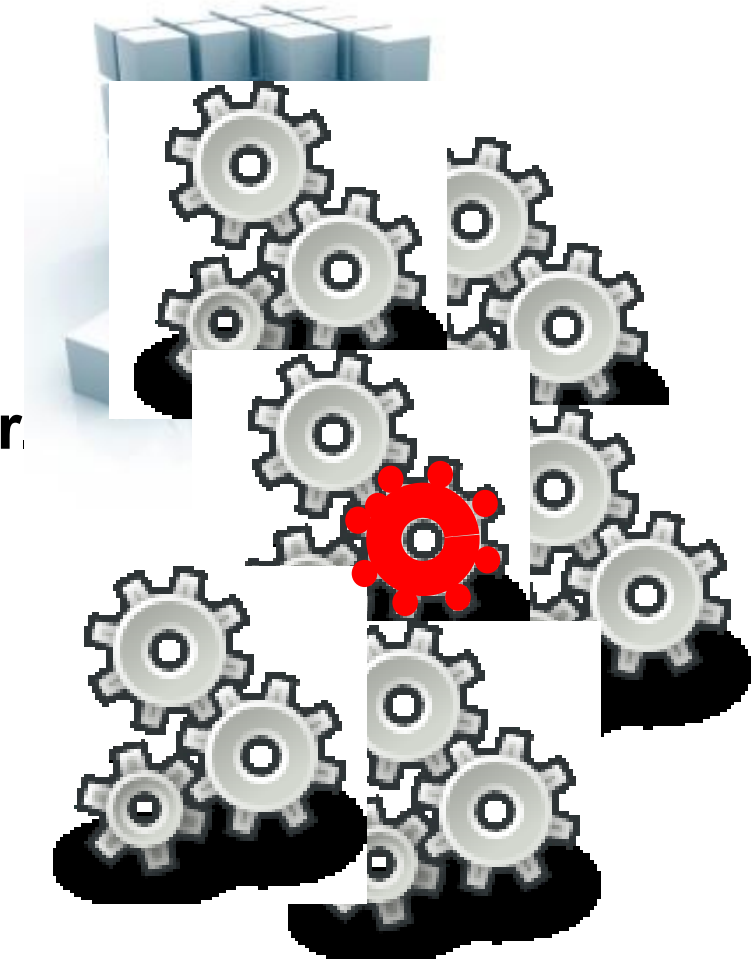
Holistic approach of all those components is essential for success of a national management framework!

- **Regulators have a very important role:**
 - Regulation should be seen as one block of public policies on water services, one out various.
 - But it has a very important role given the fact that it promotes and or controls the remaining blocks.



■ Regulatory model:

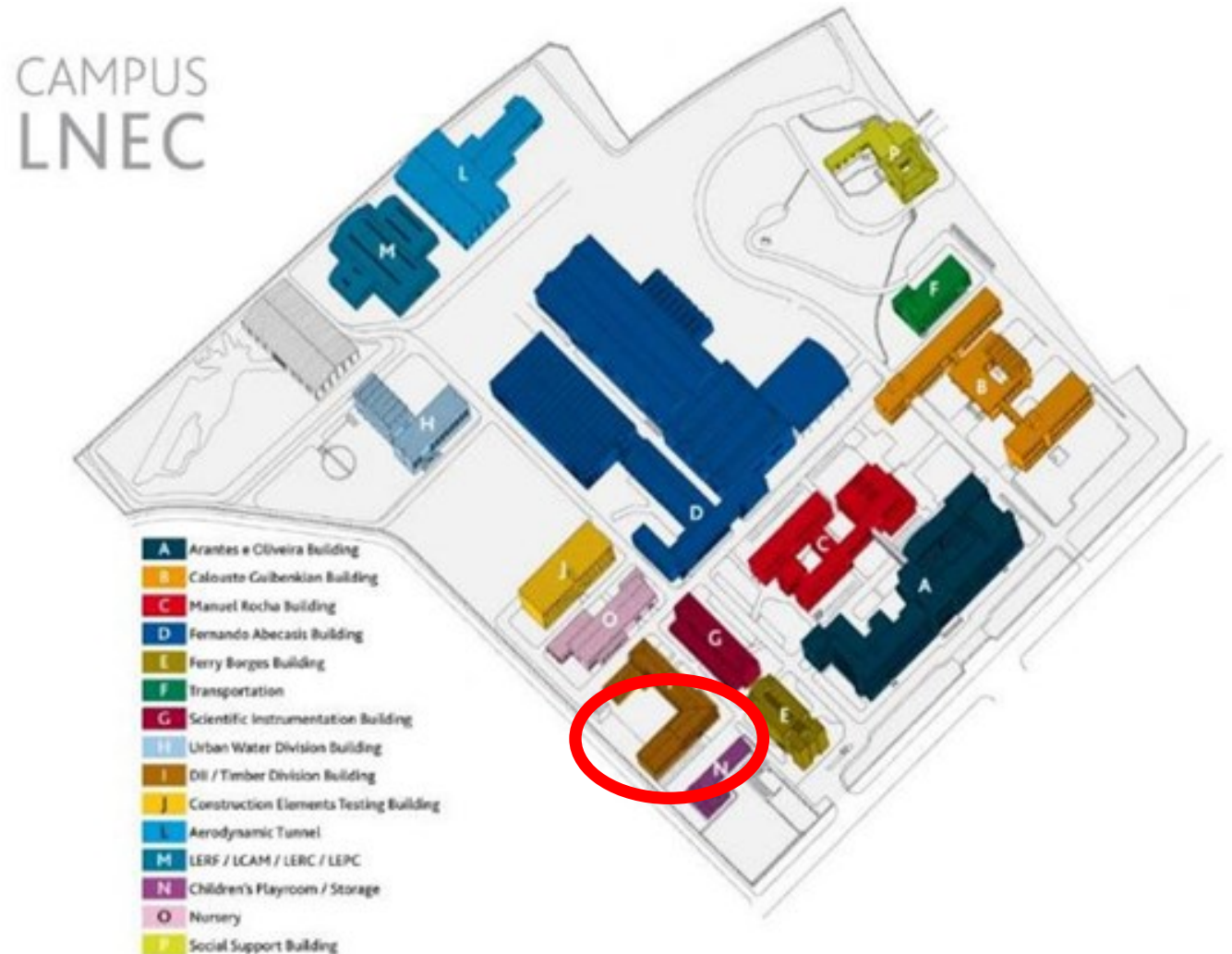
- **Structural regulation of the sector:**
 - Contribution to the organisation of the sector.
 - Contribution to the legislation of the sector.
 - Contribution to the information of the sector.
 - Contribution to the capacity building of the sector.
- **Behavioural regulation of the utilities:**
 - Legal and contractual regulation.
 - Economic regulation.
 - Quality of service regulation.
 - Drinking water quality regulation.
 - Consumers interface regulation.



LIS-Water physical resources

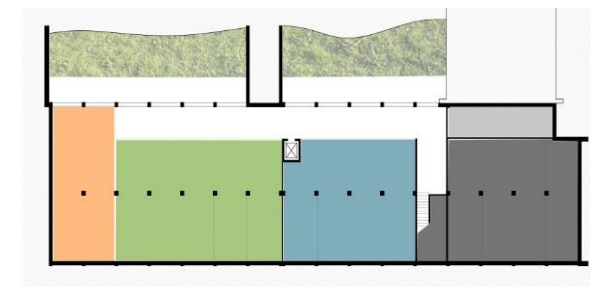
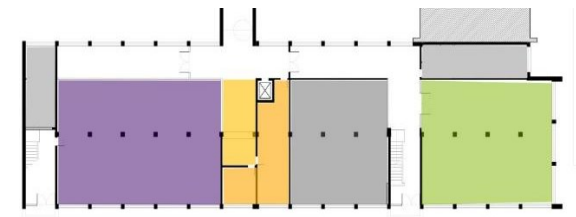
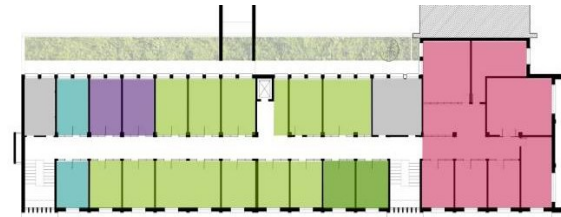
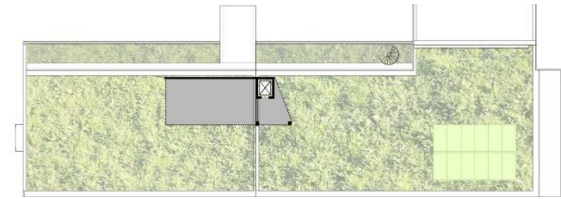
■ LIS-Water location

- The LIS-Water headquarters will be located in LNEC's Campus, a pleasant, spacious (22 ha) and green area with huge potential.
- It enjoys a good location in Lisbon, close to the airport, main highways and accessible public transport.



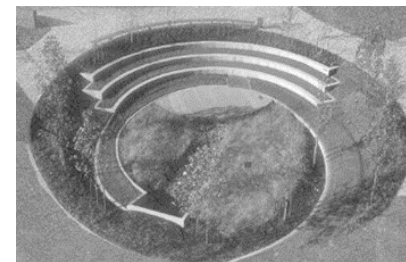
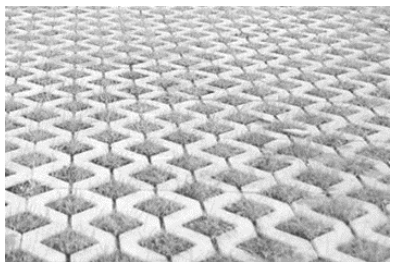
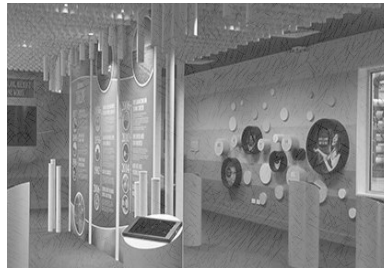
■ LIS-Water building

- Existing three-storey building (two floors and basement) with a total area of almost 3,000 m².
- Renewal for efficiency, functionality and modernity.



■ LIS-Water water garden

- Water educational garden
- Water interpretation centre
- Low water consumption vegetation
- Pilot water infiltration pavements
- Pilot water facilities (infiltration, retention, etc.)



■ LIS-Water complementary facilities

- Experimental facilities, including about 30 laboratories.
- Congress Centre with 2 auditoriums, 6 well equipped class rooms, and support staff.
- Large library with working spaces for researchers, students and other participants.
- Two videoconference rooms.
- One broadcasting centre, managed by the Foundation for National Scientific Computing (FCCN/FCT).
- Coffee areas and lunchroom.
- Accommodation facilities, which can lodge up to 20 students.
- Medical care centre.
- Kinder garden.
- Cultural facilities.
- Outdoor exercise facilities, with a 4,000 m walking track.



LIS-Water ecosystem strategy

■ LIS-Water ecosystem

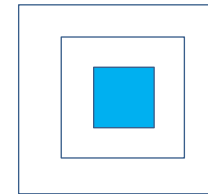
- Central Government
- Regional Government
- Local Government
- Public administration and regulators
- Universities and R&D centres
- Water utilities
- Industry in general
- Technical associations on water
- International organisations
- Multilateral development banks
- Cooperation organisations
- Civil society associations
- Media partners



■ LIS-Water ecosystem

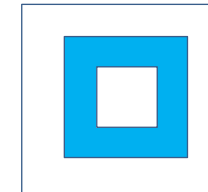
• Members

- Cooperate element that formally is part of LIS-Water, has strong rights and duties, seats in general assembly, can vote, provide an annual contribution and definitively influence the activity of LIS-Water.



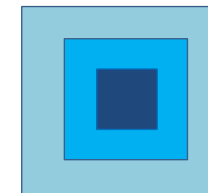
• Associates

- Corporate or individual element that is not formally part of LIS-Water, but only includes its ecosystem, and has a MoU or a simple written agreement with LIS-Water.



• Partners

- Corporate or individual element (within or outside the LIS-Water ecosystem) and LIS-Water, only for a specific project or initiative within a limited time.



Become an associate / partner without any cost:
<http://web.spi.pt/forms/lis-water-partnership-application-form>



■ LIS-Water campus

- LIS-Water is the catalyst for the creation of a vibrant Water Campus.
- LIS-Water boost synergies with several organisations located in the campus, with added value for the sector:
 - LNEC
 - Portuguese Water Partnership (PPA)
 - Water Resources Portuguese Association (APRH)
 - Environmental and Sanitary Engineering Portuguese Association (APESB)
 - Association of Portuguese Companies for the Environmental Sector (AEPSA)
 - International Centre of Excellence on Water from UNECE focused on Public Private Partnerships (ICoE).





Centre of Excellence (CoE) focused on public policies, regulation and management of water services and related water resources

Better water governance for a better world!